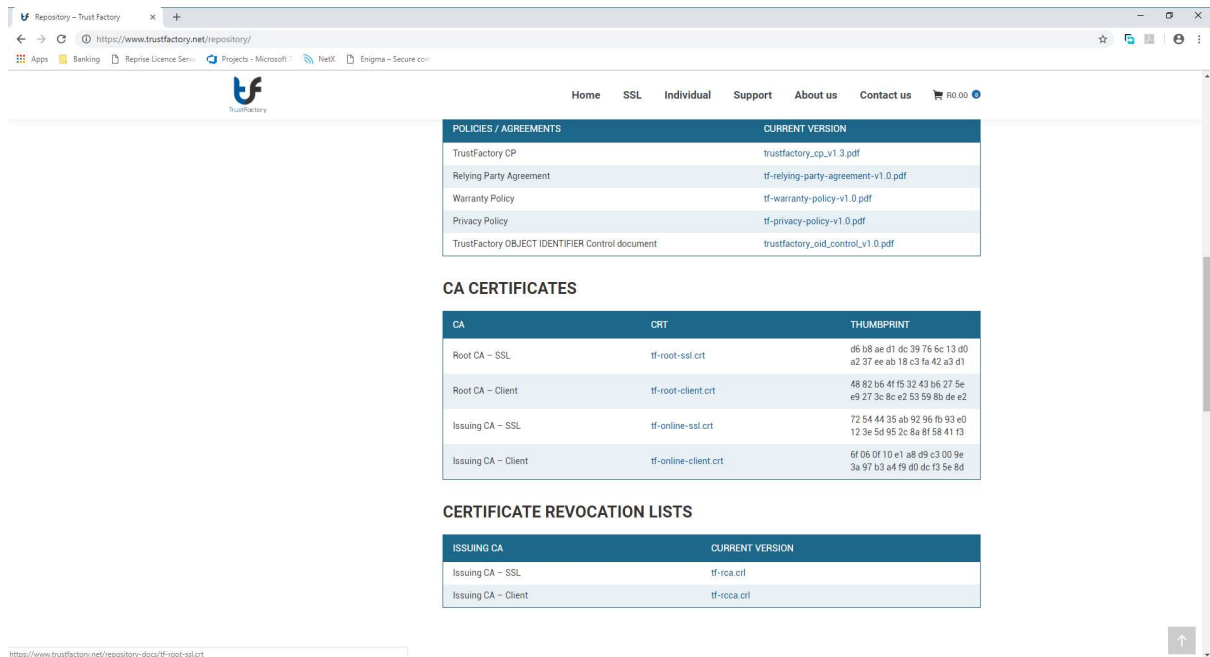


# Installation of SSL Root Certificate into Local Certificate Store



The screenshot shows the TrustFactory repository website. The navigation menu includes Home, SSL, Individual, Support, About us, and Contact us. The main content area is divided into three sections:

- POLICIES / AGREEMENTS**: A table listing various documents and their current versions.
- CA CERTIFICATES**: A table listing CA certificates, their CRT files, and their thumbprints.
- CERTIFICATE REVOCATION LISTS**: A table listing issuing CAs and their current revocation lists.

POLICIES / AGREEMENTS		CURRENT VERSION
TrustFactory CP		trustfactory_cp_v1.3.pdf
Relying Party Agreement		tf-relying-party-agreement-v1.0.pdf
Warranty Policy		tf-warranty-policy-v1.0.pdf
Privacy Policy		tf-privacy-policy-v1.0.pdf
TrustFactory OBJECT IDENTIFIER Control document		trustfactory_oid_control_v1.0.pdf

CA	CRT	THUMBPRINT
Root CA - SSL	tf-root-ssl.crt	05 b8 ae d1 dc 39 76 6c 13 d0 a2 37 ee ab 18 c3 fa 42 a3 d1
Root CA - Client	tf-root-client.crt	48 82 b6 4f f5 32 43 b6 27 5e e9 27 3c 8c e2 53 59 8b de e2
Issuing CA - SSL	tf-online-ssl.crt	72 54 44 35 ab 92 96 fb 93 e0 12 3e 5d 95 2c 8a 8f 58 41 f3
Issuing CA - Client	tf-online-client.crt	6f 06 0f 10 e1 a8 d9 c3 00 9e 3a 97 b3 a4 f9 d0 dc f3 9e 8d

ISSUING CA	CURRENT VERSION
Issuing CA - SSL	tf-oca.crl
Issuing CA - Client	tf-occa.crl

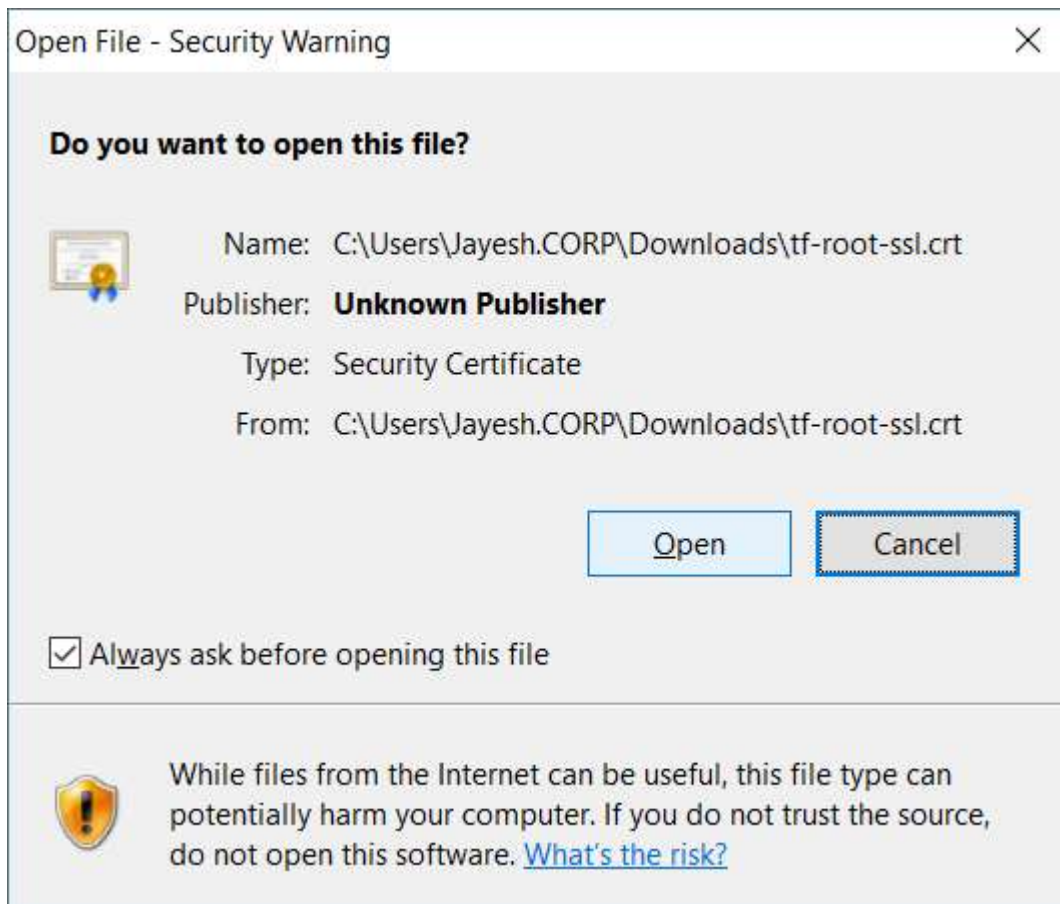
<https://www.trustfactory.net/repository-docs/tf-root-ssl.crt>

Using your web browser, go to the URL: <https://www.trustfactory.net/repository>

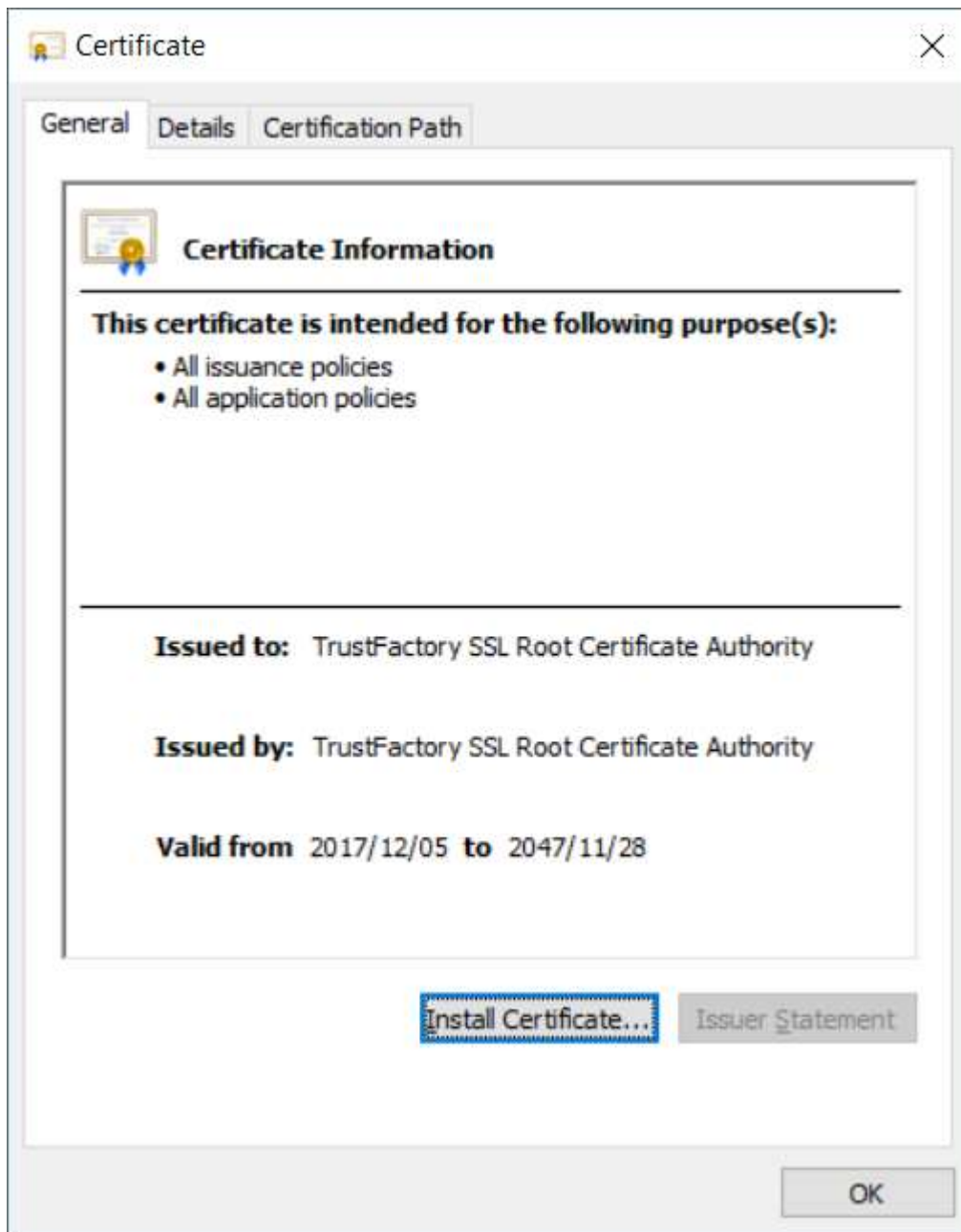
On the repository page, scroll down to the CA Certificates section.

Click on **tf-root-ssl.crt** to download the SSL Root Certificate.

Once downloaded onto your computer, click on the downloaded file to open.

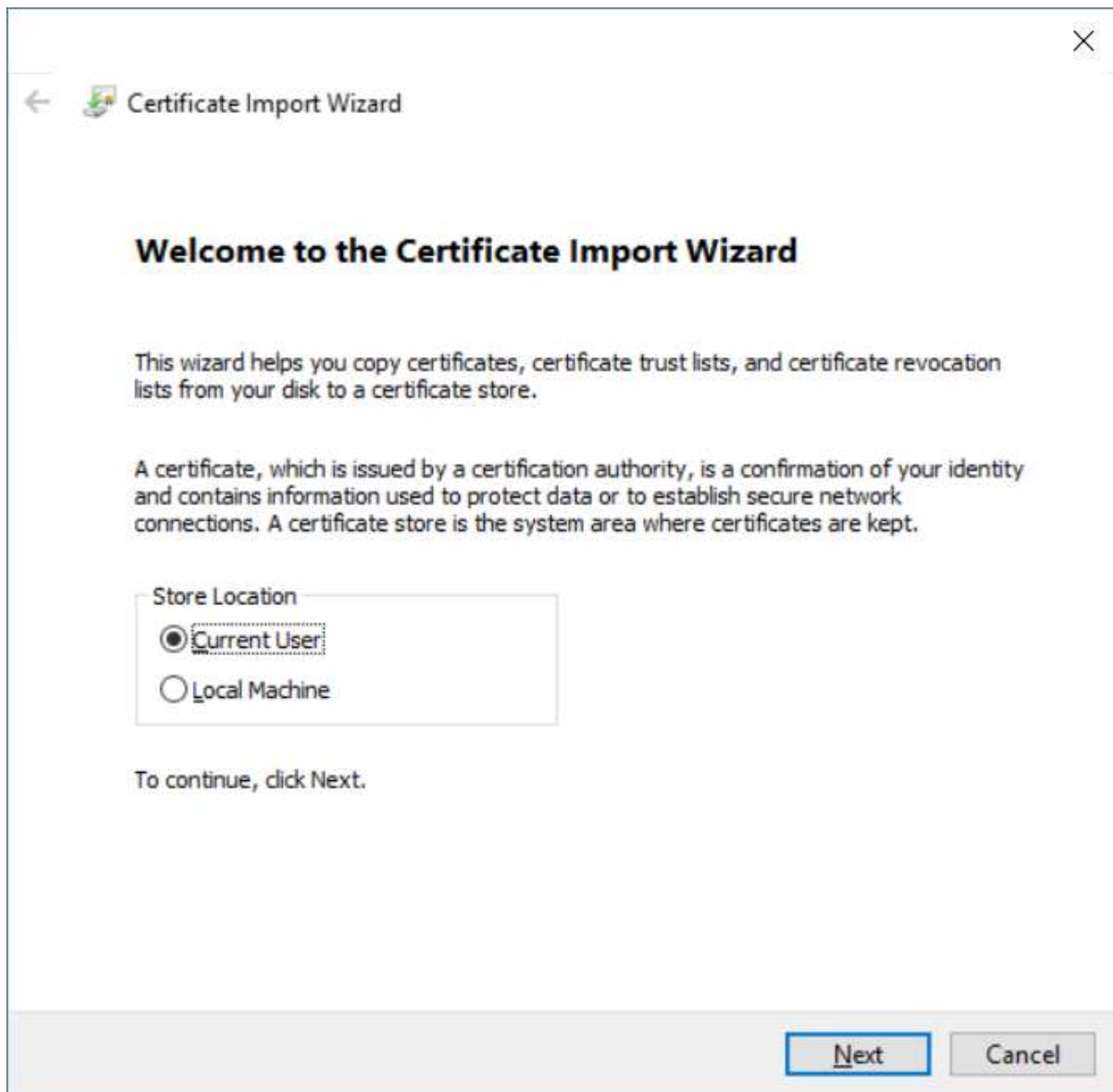


Click on **Open** to open the certificate.

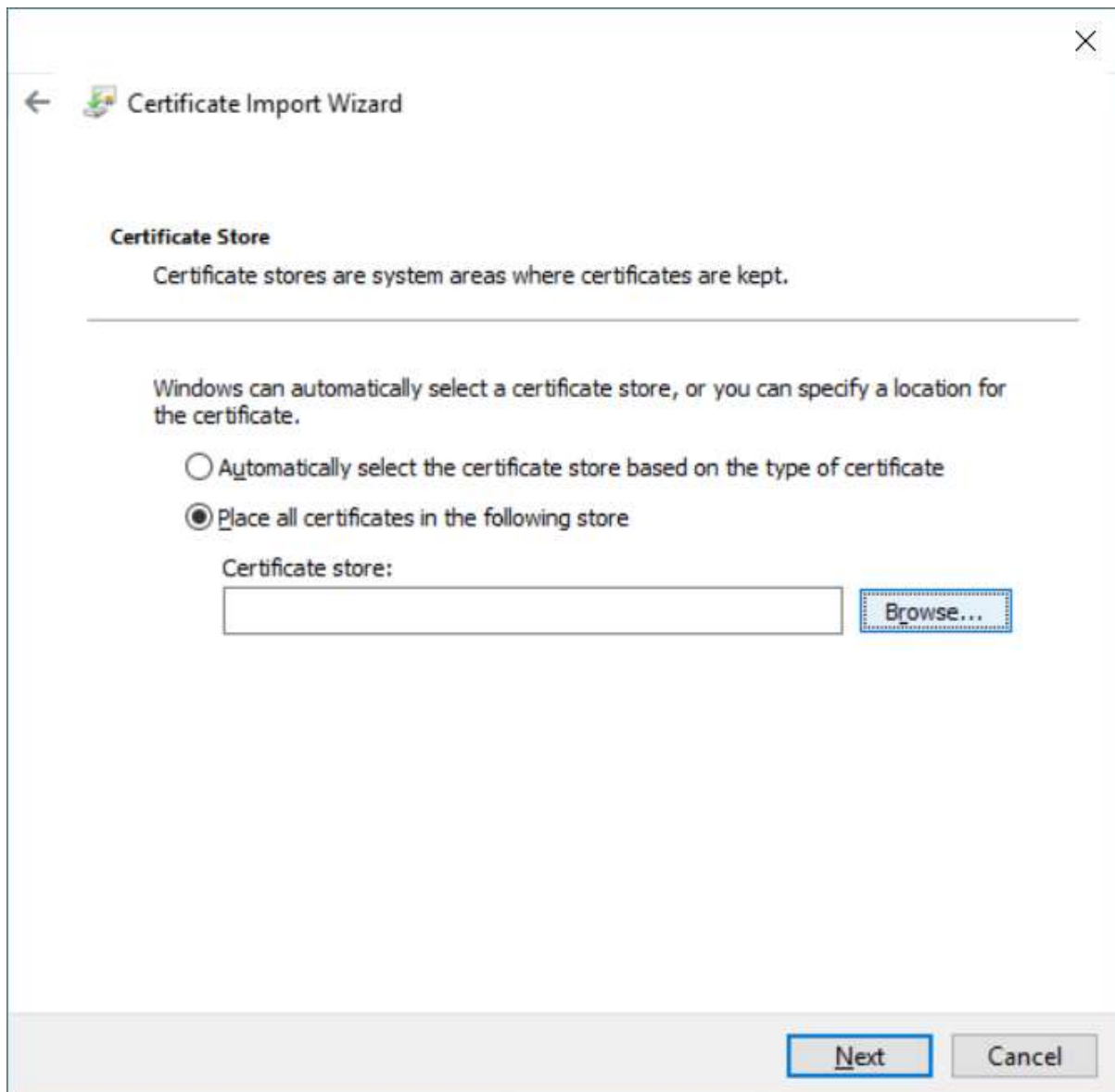


The self-signed **TrustFactory SSL Root Certificate Authority** certificate will be displayed.

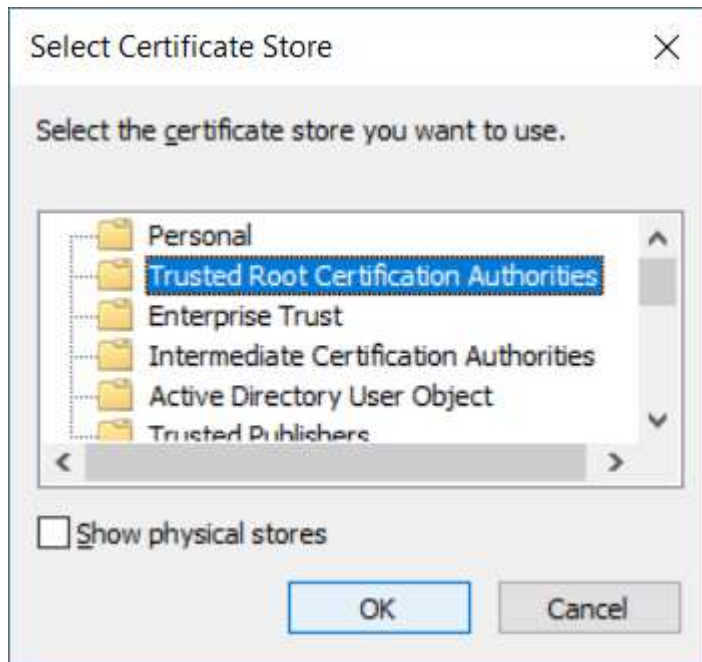
Click on **Install Certificate...** to start the installation process.



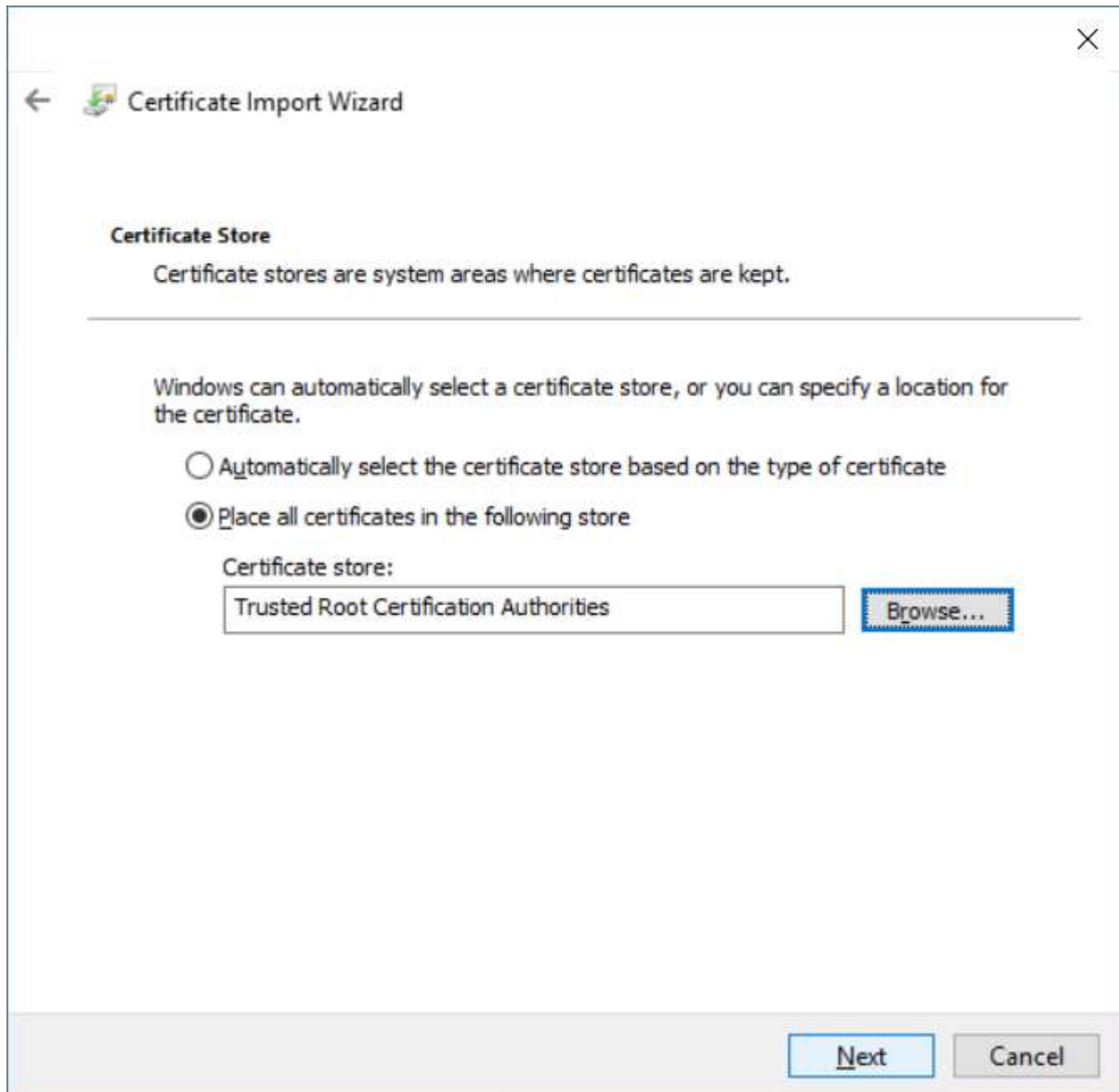
The certificate import wizard will be displayed. Ensure that the **Current User** is selected as the **Store Location** and click on **Next**



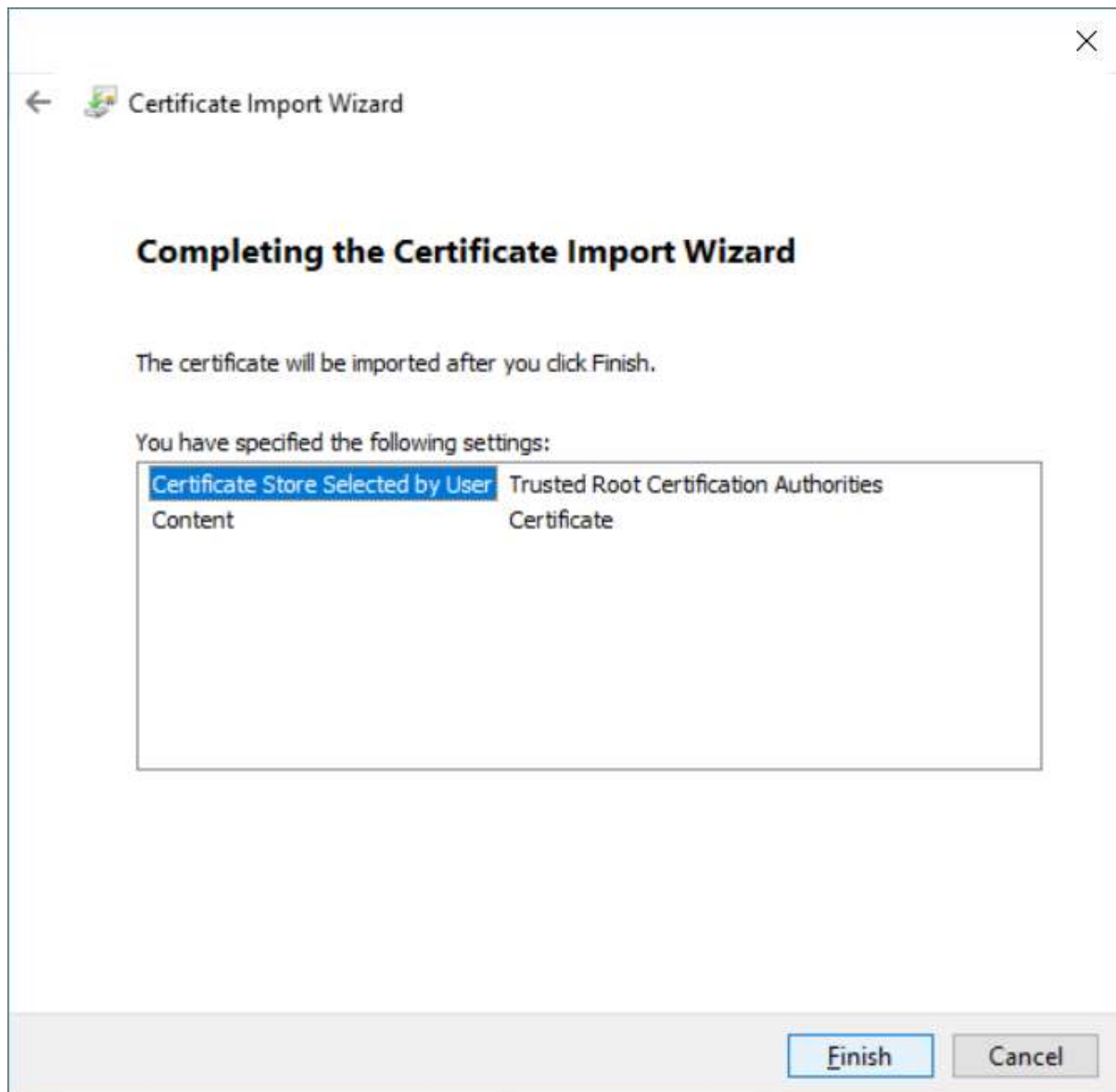
Select the **Place all certificates in the following store** option, and click on **Browse...**



At the **Select Certificate Store** dialog, select the **Trusted Root Certificate Authorities** option and click on **OK**

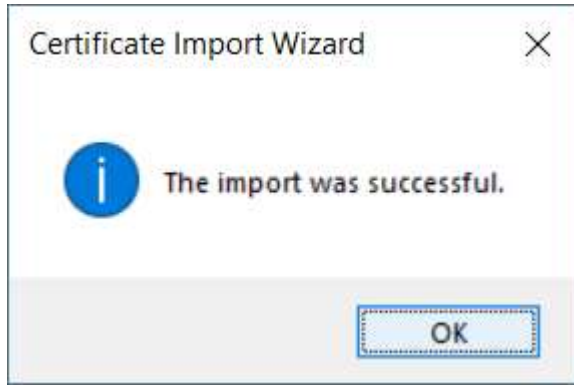


Click on **Next**

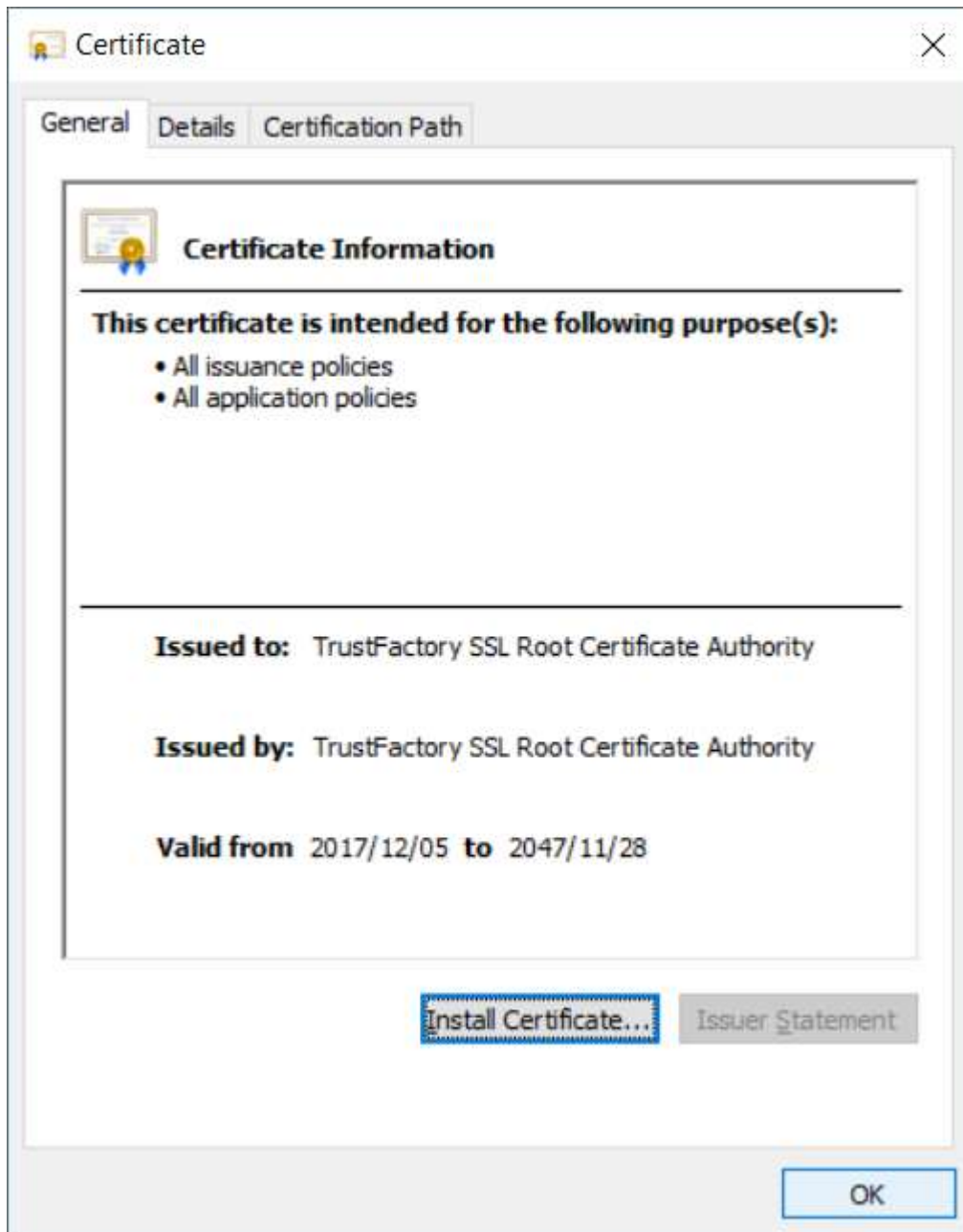


Click on **Finish**





At the completion dialog, click on **OK**



Click on **OK** to close the certificate window